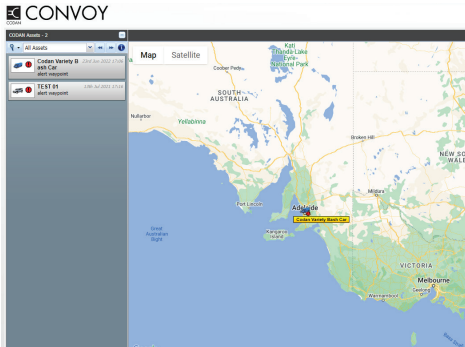


ASSET TRACKING & FLEET MANAGEMENT

CODAN CONVOY



Powered by TerraMar

Codan Convoy provides comprehensive asset tracking and fleet management solution, addressing the growing needs of today's security-conscious world.

Convoy provides true global coverage anytime of the day, with its satellite and cellular communications to help run a safe, efficient and cost-effective tracking and fleet operations.

KEY FEATURES

- Worldwide coverage
- Dual mode – satellite and cellular
- Web portal access – track from any device anywhere
- Web portal access - user control
- Easy to operate user interface
- Google maps integration
- Real time tracking – auto
- Route planning and playback
- Waypoints
- Incursion and excursion alerts
- Remote vehicle immobilisation
- Panic alarm for drivers
- Driver identification device
- Vehicle fleet management support
- Range of data plans

TRACKING

Asset tracking is made simple with Codan Convoy's web based software solution, which can be accessed from anywhere in the world. Convoy supports a wide range of hardware and communication technologies making it suitable in a variety of tracking applications.

Accessories like the panic alarm and driver access key fob help to ensure driver safety and accountability as well as asset traceability. An ability for system administrators to remotely immobilize vehicle assets helps to increase personnel and asset security in high risk operational scenarios.

A comprehensive programming interface allows tracking data to be exported and integrated into other systems, like CRM applications or alarm monitoring systems. Extensive storage and replay of historical tracking data is supported as a standard capability.

Generation of reports on-screen and by e-mail provides an easy way to efficiently keep track of all assets. A variety of geo-fencing alerts can be configured to provide SMS or e-mail notifications for activities like entering or exiting a designated alert area or out of hours movements.

FLEET MANAGEMENT SYSTEMS (FMS)

Convoy's comprehensive fleet management capability enables organizations to reduce fleet costs, optimize maintenance schedules, and enhance worker safety. Convoy also has the ability to accept manually entered data for untracked assets, providing easy management of entire fleet in one convenient place. Comprehensive database of assets with detailed specifications and document upload capability is available. Organisations can also customise and automate their finance or maintenance workflows by using Convoy's API's to import fleet information and data.

GENERAL

Convoy offers a wide range of devices and applications to support asset tracking and fleet management. It is truly a device agnostic platform with ability to integrate new telematic devices into the system based on customer requirements.

- Track people with personal tracking devices for workplace safety in lone remote worker scenarios
- Quick fit tracking devices for easy temporary installation in on-demand tracking situations
- Simple cellular based motorcycle tracking devices
- Track un-powered assets with self-powered tracking devices

ASSET TRACKING & FLEET MANAGEMENT

CODAN CONVOY

CODAN
COMMUNICATIONS

DTC

SPECIFICATIONS

MODEM

Network access	Satellite: Two-way, Global, IsatData Pro Cellular: GPRS and HSPA (worldwide coverage)
GPS constellations	GPS, GLONASS, BEIDOU, GALILEO
Input voltage range	9 to 32V DC
Environmental	Operational temperature range: -40°C to +85°C Backup battery: -20°C to +75°C MIL-STD-810G shock and vibration IP67 for ingress
Back up battery capacity	Greater than 48 hours operation (1 min Cell / 60 min Sat)
Regulatory compliance	CE, FCC/IC, FFA, PTCRB, Inmarsat type approval, ACMA, ICASA, Anatel, IFT, IEC 60945, ENACOM
SIM card slots	One user accessible SIM card slot
SIM card voltage	3.3V and 1.8V
Dimensions	148 x 113 x 47mm (5.8 x 4.5 x 1.8 in)
Weight	0.5kg (1.1 lbs)
Mounting	4 x edge mounting slots

SATELLITE ANTENNA

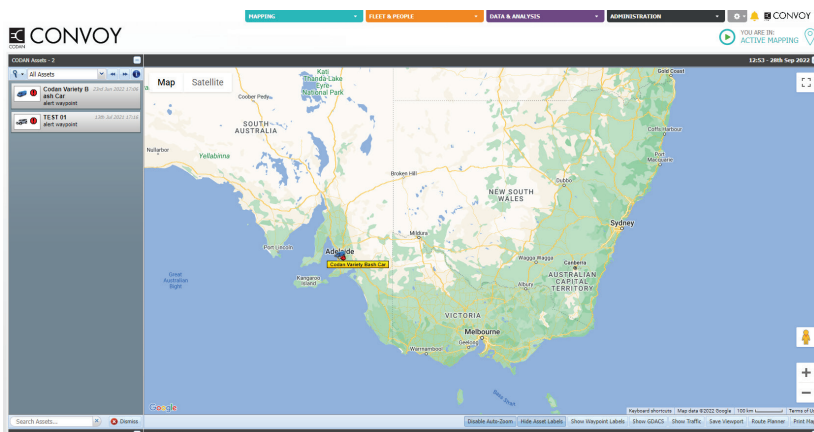
Environmental	Operational temperature range: -40°C to +85°C MIL-STD-810G shock and vibration IP67 for ingress
Mounting	Variants with cable exit at side or bottom of satellite antenna body
Cabling	5m (16.4 ft) length power and signal cable

CELLULAR ANTENNA

Environmental	Operational temperature range: -40°C to +85°C
Mounting	Adhesive backed
Cabling	3m (9.8 ft) length signal cable

GENERAL

Supported browsers	Google Chrome, Mozilla Firefox, Microsoft Edge, Safari
---------------------------	--



Convoy web portal user interface

ASSET TRACKING & FLEET MANAGEMENT

CODAN CONVOY



DATA PLANS

BASIC PLAN

Supported networks	Satellite and cellular
Reporting periods	Cellular – vehicle ignition on/off: 1min / 24 hours Satellite – vehicle ignition on/off: 60min / 24hours
Term	12 months, renewable
Data Overages	Optional

STANDARD PLAN

Supported networks	Satellite and cellular
Reporting periods	Cellular – vehicle ignition on/off: 1 min / 24 hours Satellite – vehicle ignition on/off: 5 min / 24hours
Term	12 months, renewable
Data Overages	Optional

PREMIUM PLAN

Supported networks	Satellite and cellular
Reporting periods	Cellular – vehicle ignition on/off: 1 min / 24 hours Satellite – vehicle ignition on/off: 2 min / 24hours
Term	12 months, renewable
Data Overages	Optional

NOTE: These service plans, and the data capacities allocated to them, are based on an assumed average ignition on period (driving hours) of 10 hours per day for 5 days per week. If the average driving hours for tracked assets are exceeded, the service over satellite might be suspended until the start of the next reporting period (month) OR the service will continue, but overages charges may be applied, if enabled The cellular service will continue to operate within cellular coverage.

ORDERING PART NUMBERS - DATA PLANS

- 20-00206-012: Basic Plan, 12 month term
- 20-00207-012: Standard Plan, 12 month term
- 20-00208-012: Premium Plan, 12 month term

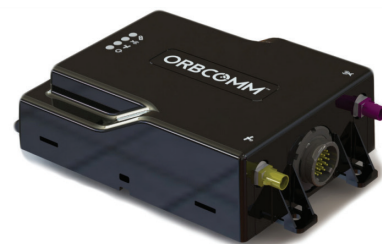
ORDERING PART NUMBERS – MODEM KITS

- 15-60104: Modem Kit with bottom cable entry satellite antenna
- 15-60105: Modem Kit with side cable entry satellite antenna

NOTE: Modem kits include main wiring loom, ignition sense wiring loom, and Global SIM card. Please contact your Codan representative for more detailed information.

ORDERING PART NUMBERS – ACCESSORIES

- 15-60102: Panic button kit
- 15-60105: Vehicle immobilisation relay kit
- 15-60106: Drive ID magnetic key-fob kit



Satellite-cellular data modem